



293 Dedworth Road, Windsor, Berkshire, SL4 4JS  
£575,000

 **HORLER**

## 293 Dedworth Road, Windsor, Berkshire, SL4 4JS

Situated on Dedworth Road in Windsor, this three-bedroom bungalow presents an excellent opportunity for those seeking a comfortable and convenient home. The property is ideally situated, offering easy access to local amenities, reputable schools, and efficient transport links, making it perfect for families and commuters alike.

This bungalow is a rare find, combining comfort, practicality, and a prime location. It is an ideal choice for those looking to settle in the picturesque town of Windsor. Do not miss the chance to make this delightful property your new home. Call today on 01753 621234 to book a viewing.



## Property Summary

Situated on Dedworth Road in Windsor, this three-bedroom bungalow presents an excellent opportunity for those seeking a comfortable and convenient home. The property is ideally situated, offering easy access to local amenities, reputable schools, and efficient transport links, making it perfect for families and commuters alike.

Upon entering, you are welcomed by a spacious living and dining room, featuring a delightful front bay window that fills the space with natural light. This inviting area is perfect for both relaxation and entertaining guests. The separate kitchen has a range of eye and base level units, providing ample storage and workspace.

The bungalow boasts three well-proportioned bedrooms, offering flexibility for family living or the option to create a home office. The family bathroom is conveniently located, catering to the needs of the household.

Outside, the property features a detached garage and a store room, providing additional storage solutions or potential for a workshop. The south-facing paved rear garden offers a sunny retreat for outdoor activities. To the front of the property is a paved driveway with offroad parking for a number of vehicles.

This bungalow on Dedworth Road is a rare find, combining comfort, practicality, and a prime location. It is an ideal choice for those looking to settle in the picturesque town of Windsor. Do not miss the chance to make this delightful property your new home.

## General Information

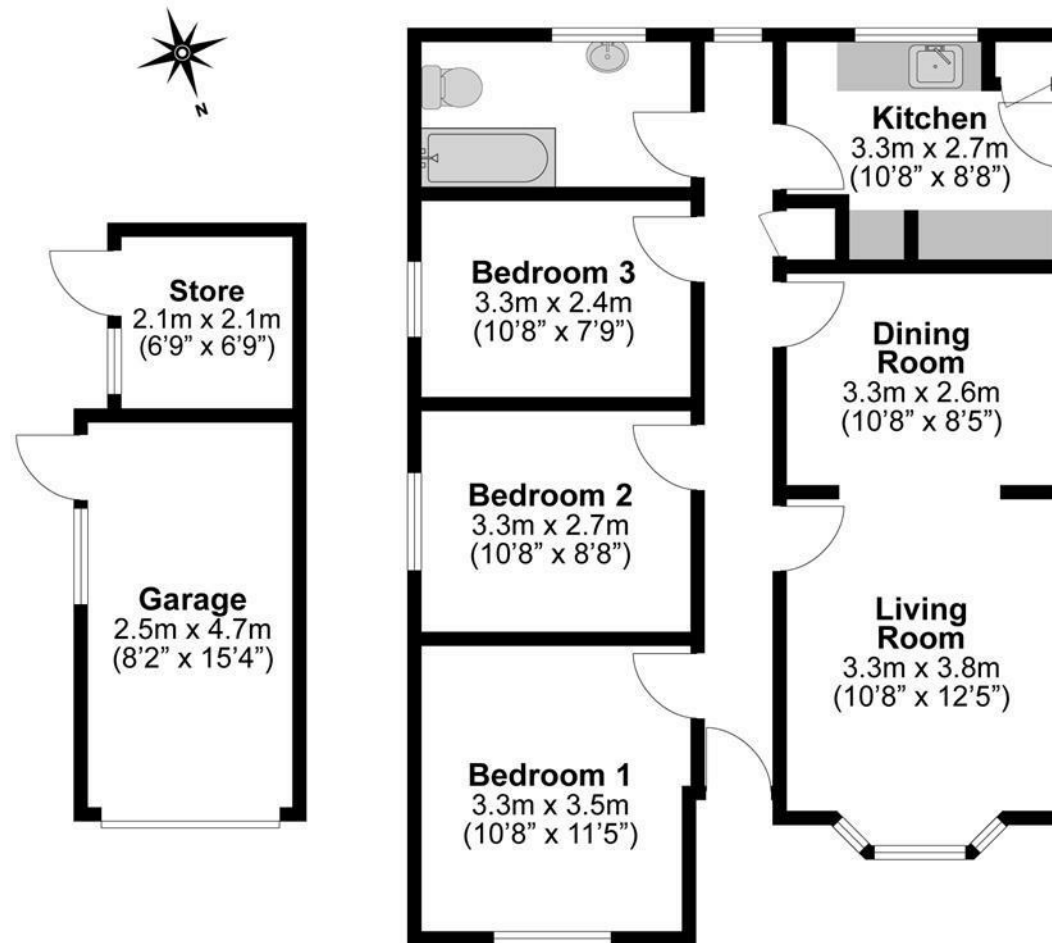
Council Tax Band 'E'

## Legal Note

\*\*\*Although these particulars are thought to be materially correct their accuracy cannot be guaranteed and they do not form part of any contract\*\*\*







**Illustrations are for identification purposes only,  
measurements are approximate, not to scale.**